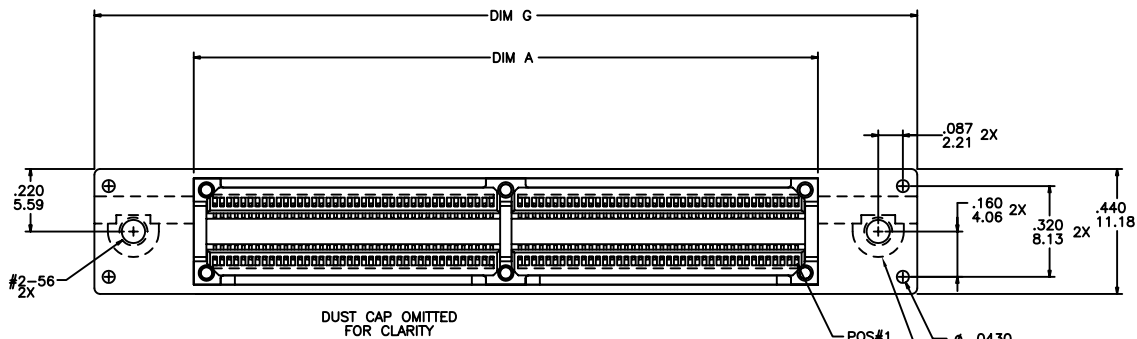
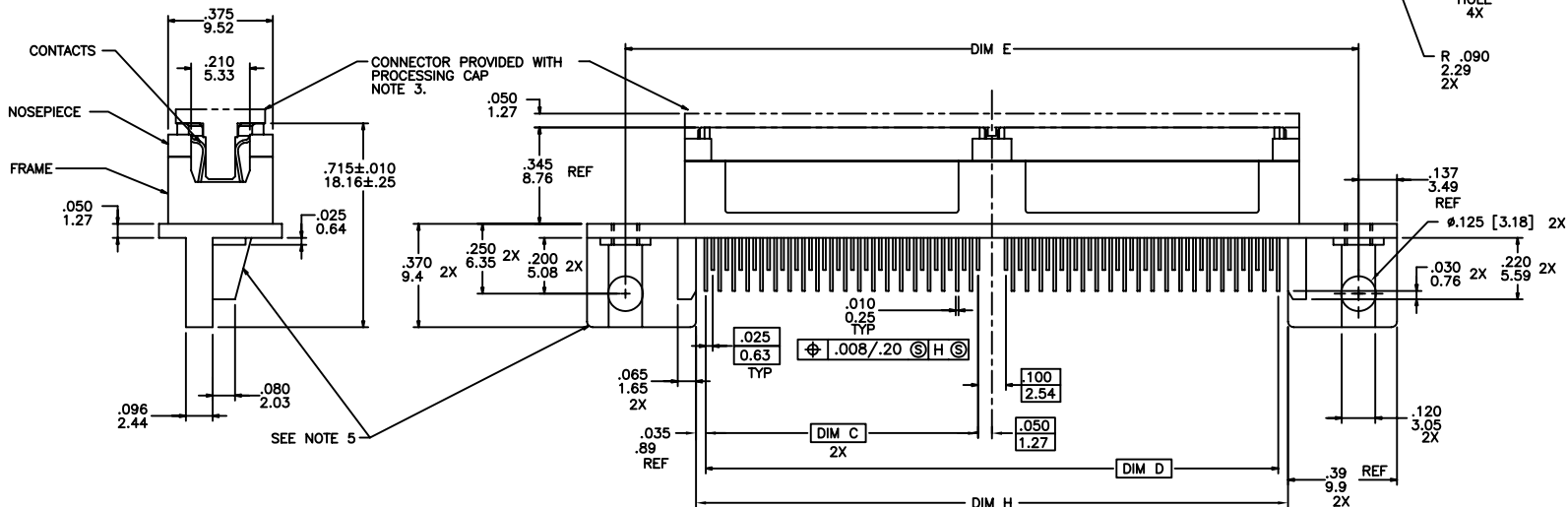


PRODUCT NUMBER  
SEE TABLE



DUST CAP OMITTED FOR CLARITY



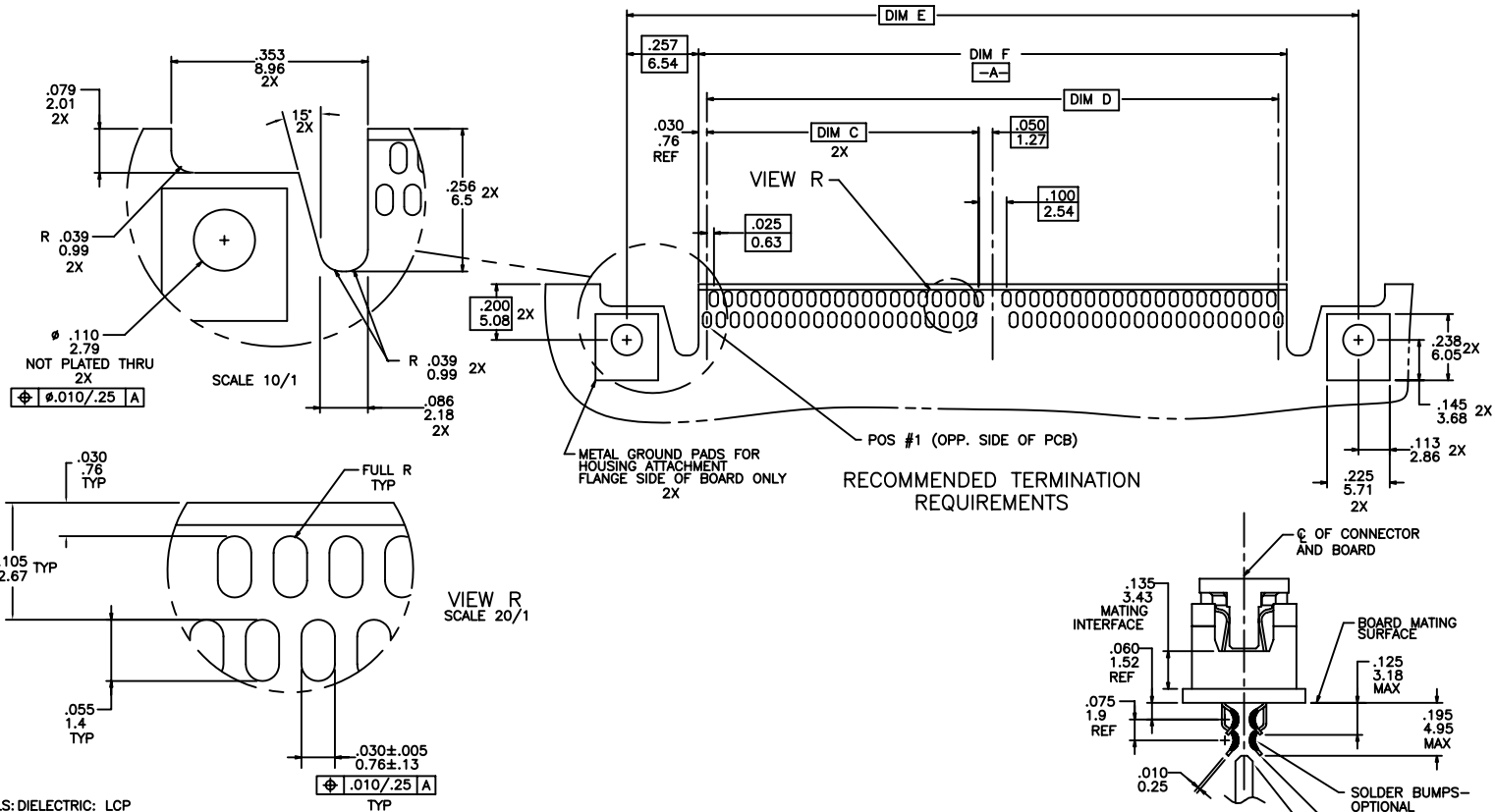
FCIconnect.com

Copyright FCI

mat'l. code		surface		tolerance		projection		product family	
NOTE 1		ISO 1802		ISO 406 ISO 1101		INCH/MM		MICROPAX	
ltr	ecn no	dr	date	tolerances unless otherwise specified		scale		title	
F	v60661	LSS	4/15/96	angles	linear	1:1		.025M STRADDLE RECEPT. DOUBLE MODULE	
G	v61446	EPK	10/10/96					dwg no	
H	v70193	RGD	2/19/97	0°±2'				94662	
J	v12115	MEM	10/09/01	dr	M. CORNMAN	5/09/94		sheet 1 of 3 size	
K	M06-0279	MNR	7/24/06	engr	M. HAHN	5/09/94		A3	
L	M07-0096	AGS	2/08/07	chr	M. HAHN	5/09/94		type	
M	M08-0251	MHT	9/08/08	appd	M. HAHN	5/09/94		Product Customer Drawing	
sheet	revision	M	M	M					
index	sheet	1	2	3					

form A3

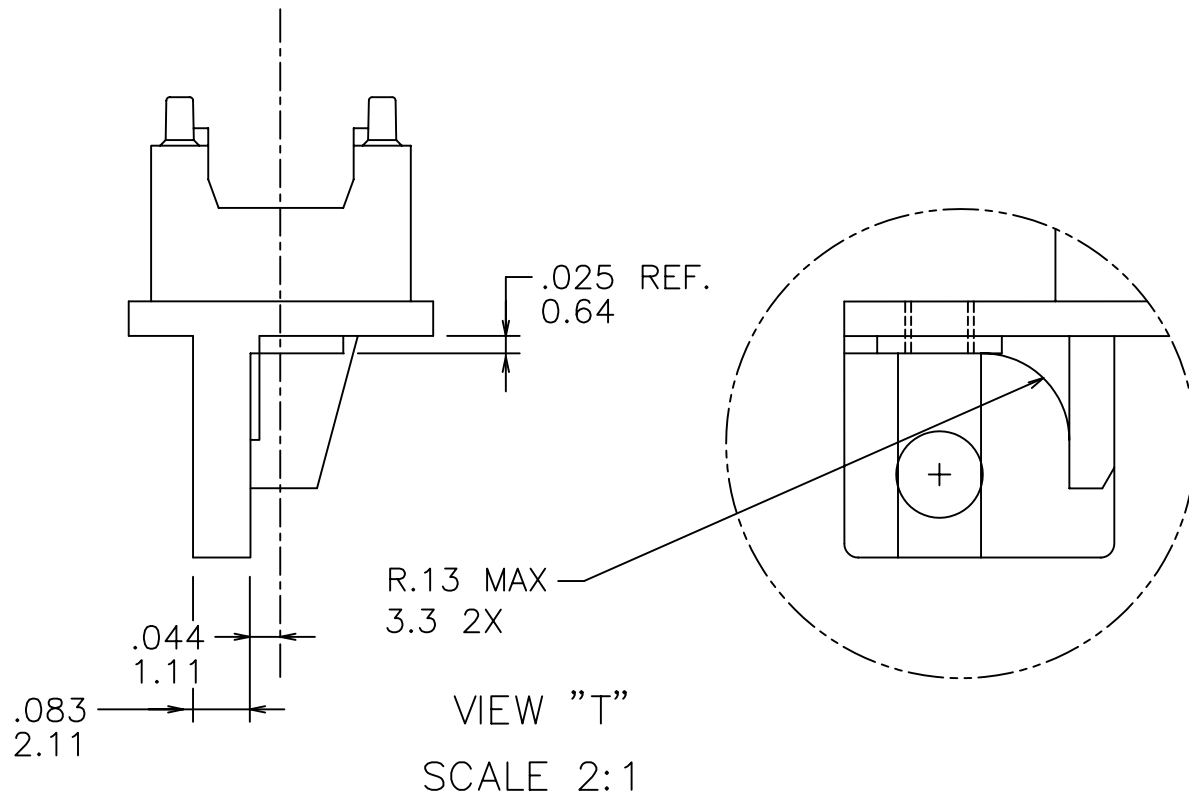
PRODUCT NO. NOTE ⑥	NO. OF CONTACTS	DIM A	DIM C	DIM D	DIM E	DIM F	DIM G	DIM H	BOARD THICKNESS	SOLDERBUMP	CONTACT PLATING NOTE 2	PROCESSING CAP	NOTE 5
94662-131	200	2.700/68.58	1.225/31.12	2.550/64.77	3.125/79.38	2.610/66.29	3.400/86.36	2.620/66.55	.062/1.58	YES	30 GXT	ORDER SEPARATELY	NO
94662-134									.074/1.88			NO	
94662-135									.088/2.24			ORDER SEPARATELY	YES



- NOTES:
- MATERIALS: DIELECTRIC: LCP  
CONTACTS: Be Cu  
FRAME: ZINC ALLOY #3
  - PLATING:  
SOLDER TAILS: 150u"/3.81u Sn Pb  
FRAME: 100u"/2.54u Ni  
CONTACT: 30u"/.76um GXT OVER 50u"/1.27um Ni  
LF OPTION  
SOLDER TAILS: 150u"/3.81u Sn  
FRAME: 100u"/2.54u Ni  
CONTACT: 30u"/.76um GXT OVER 50u"/1.27um Ni
  - DO NOT REMOVE PROCESSING CAP UNTIL SOLDERING IS COMPLETED. CAP WILL PREVENT POTENTIAL NOSE PIECE BOW DURING HIGH TEMP. SOLDERING PROCESS.
  - PCB CHAMFER FOR -.135 TO BE BE .026±.010/0.66±0.25 X 33°.
  - MOUNTING FLANGES FOR -.135 ARE MACHINED TO ACCOMMODATE .088" THK. BOARD & MAINTAIN CENTERLINE OF CONNECTOR & BOARD ON THE SAME PLANE. SEE VIEW "T" FOR FLANGE DIMENSIONS, PLATING TO BE PERFORMED AFTER MACHING
  - ADD "LF" SUFFIX AT THE END OF PART NUMBER FOR LEAD FREE OPTION.
  - IF PART NO "LF" THIS PRODUCT MEETS EUROPEAN UNION DIRECTIVES AND OTHER COUNTRY REGULATION AS DESCRIBED IN GS-22-008.
  - THE HOUSING WILL WITHSTAND EXPOSURE TO 260°C PEAK TEMPERATURE FOR 20 SECONDS IN A CONVECTION, INFRA-RED OR VAPOR PHASE REFLOW OVEN. SEE APPLICATION NOTES/PROCEDURES IF THEY ARE AVAILABLE.
  - SEE BUS-20-084 (SET-UP APPLICATION SPEC.) FOR REFERENCE.

mat'l. code			surface		tolerance		projection		product family	
NOTE 1			ISO 1802 ✓		ISO 406 ISO 1101				MICROPAX	
ltr	ecr no	dr	date		tolerances unless otherwise specified					
M					angles	linear	$\frac{.XX\pm.01}{.XX\pm0.3}$ $\frac{.XXX\pm.006}{.XXX\pm0.13}$ $\frac{.XXX\pm.0020}{.XXX\pm0.051}$		title	
					0°±2'				.025M STRADDLE RECEPT. DOUBLE MODULE	
					dr		M. CORNMAN 5/09/94		dwg no	
					enr		M. HAHN 5/09/94		sheet 2 of 3 size	
					chr		M. HAHN 5/09/94		94662 A3	
					appd		M. HAHN 5/09/94		type Product Customer Drawing	
sheet index	revision sheet									

PRODUCT NUMBER  
SEE TABLE



Copyright FCJ

mat'l. code		surface		tolerance		projection		product family	
NOTE 1		ISO 1902		ISO 406 ISO 1101				MICROPAX	
ltr	ecn no	dr	date	tolerances unless otherwise specified				title	
M				angles	linear	INCH/MM		.025M STRADDLE RECEPT. DOUBLE MODULE	
				0°±2°		scale 1:1		dwg no	
				dr	M. CORNMAN	5/09/94		sheet 3 of 3 size	
				enr	M. HAHN	5/09/94		94662 A3	
				chr	M. HAHN	5/09/94		type	
				appd	M. HAHN	5/09/94		Product Customer Drawing	
sheet index	revision sheet								